

# CV Soldering System Firmware Upgrade

*For this software update you will require a two headed USB lead. This is not included with the CV System. These can be purchased on Amazon or in most large retailers.*

1) Go to Solder Connection's website to download software – Toggle to ‘Resources’ in the top menu then ‘CV Software Download’. Alternatively follow link below  
<https://www.solderconnection.com/Resources/CV-Software-Download.html>

2) Scroll to ‘Connection Validation Firmware Update’ and download ‘AN1388 Source Code’. If your system is a CV-5210 also download file ‘CR5200r1\_50\_\*\*’. If your system is a CV-510 also download ‘CR500r1\_50\_\*\*’. (\*\* indicates file version - this will depend on when the update is taking place).

**CONNECTION VALIDATION Firmware Update:**  
 Initial release of firmware v1.50.64 for the CV-500 power supply

Firmware update from V1.50.38 to v1.50.64\_BETA will change the following:

- CV optimization
- Password manager will now enable three user passwords in addition to the supervisor password
- Refined operation for Ultrafine tools

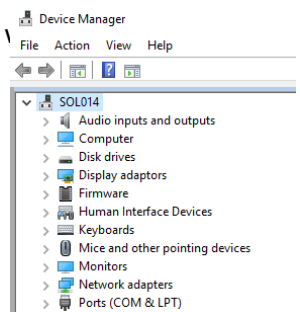
Firmware part numbers for the CV-5200 and CV-500 power supplies will be released as the same version

Date	Product	File	Download	Version
09/25/2018	Connection Validation	Instructions PDF	167KB	1.50.64
09/25/2018	Connection Validation	AN1388 Source Code	5.0MB	1.50.64
02/05/2018	Connection Validation	CR5200r1_50_38	1.31MB	1.50.38
09/25/2018	Connection Validation	CR5200r1_50_64_BETA	1.36MB	1.50.64_BETA
09/25/2018	Connection Validation	CR500r1_50_64	1.35MB	1.50.64

3) Once downloaded Unzip & open ‘AN1388 Source Code’. Install software from file. Take note of the location.

4) Unzip & open ‘CR5200r1\_50\_\*\*’ or ‘CR500r1\_50\_\*\*’ (Which you have downloaded 1 of depending on your system). Save HEX file somewhere you can access for later.

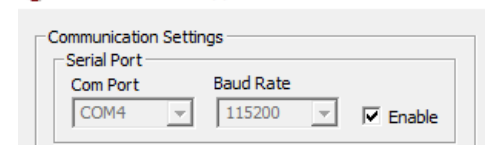
5) Connect CV system to computer using your two-sided USB cable (Cable not included) switch on yet.



6) Locate where you saved ‘AN1388 Source Code’ during step 3. Navigate through the folder.

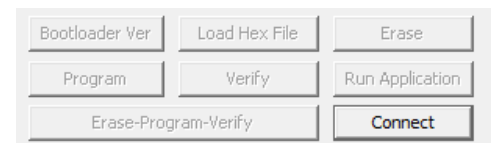
7) ‘PIC32\_Bootloader’ & ‘PC Application’. Open PIC32UBL Application.

8) To verify the ‘COM Port’ required open your computers ‘Device manager’. Identify ‘Ports (COM & LPT) in the list and expand the drop down. Identify CV System PIC32 Bootloader Application V1.2 (Generally called USB Serial Port) & make note of COM Port number.



9) Return to the PIC32UBL Application & change the ‘COM Port’ dropdown to match the CV System COM Port. Ensure ‘BAUD RATE’ is 115200 & that the ‘Enable’ box is ticked.

10) Switch CV System on whilst simultaneously holding your finger down on the CV screen until the system starts to click. This should take 3-5 seconds.



11) In PIC32UBL click ‘Connect to link application to CV System.’

12) Once ‘Device Connected shown click ‘Load HEX file’. Select the HEX file you downloaded & saved in Step 4.

13) Once loaded click ‘Erase-Programme-Verify’. This will take around 2 minutes. When completed the application will show the message ‘Programme completed – Verification successful’.

14) Click Disconnect. Once application shows ‘Device disconnected unplug your CV system.’

15) Reset CV unit (turn off & on) to confirm update completed. Version indicator will show in bottom right of title screen.