

SOLDER CONNECTION

Email: sales@solderconnection.co.uk | Tel: +44(0)1291 624 400

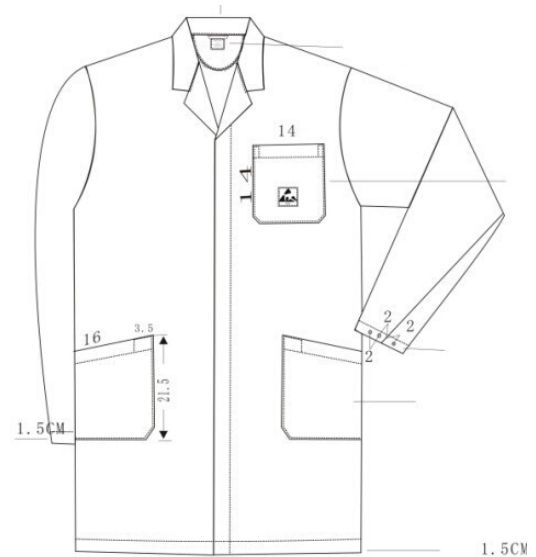
ESD Lab Jacket (KSJW / KSJB)

DESCRIPTION

These ESD garments are manufactured using a static dissipative material for use in ESD protected areas. They are lightweight, comfortable and have three pockets. An ESD symbol is on the breast pocket only. They are machine washable up to 60°C and are available in white or blue.

FEATURES & BENEFITS

- TC white or blue fabric.
- Three pockets.
- With customer's label on the collar.
- EPA label on the top pocket.
- Button closing.
- Button on the end of the sleeves.
- Crimping: 1.5cm.
- Custom logos and embroidery available on request.



TECHNICAL

5mm Grid Pattern	
Composition	64.3% / 34.8% / 0.9% T/C/carbon fibre
Weight (g/m ²)	131
Width	60 inch, 150cm
Density	Warp 80, Weft 60
Surface Resistivity	10 ⁶ ~ 10 ⁸ ohm/unit
Electrical Potential	0.20 μC/m ²
Air Permability	460 c.c/cm ² /sec
Tensile Strength	Warp 770N, Weft 780N
Tear Strength	Warp 3970gf, Weft 3310gf
Colour Retention	4-5
Decay Time	0.1 sec

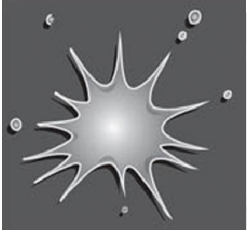
Performance Data

Surface Resistance	(longitude) 10 ⁶ -10 ⁸ ohm/unit		
Washing Details	More than 50 industrial washes at medium temperature	Ref. Washing ways.	GB12014-1989
Conforms To Standard	SJ/T10694-2006, IESE-RP-CC003, 《ESD cloth testing standard》 IEC 61340-5-1 Tariff Code- 62113310		

SIZING

Sizes (**For ESD Lab Jackets)					
Size (CM's)	Shoulder Width (A)	Half Breast Ø (B)	Length of Sleeve (C)	Half Sleeve Ø (D)	Length (L)
S	43-44	51-53	59-62	21-22	77-80
M	44-45	53-55	61-62	22	77-81
L	45-49	55-58	62-64	22-23	78-83
XL	49-50	58-61	63-65	23	79-83
XXL	53-54	64-65	65-66	24-26	79-85
XXXL	55-57	68-70	65-66	25-27	80-86
XXXXL	57-59	71-73	66-67	27-28	80-86

Size tolerance applies before washing. **Please note:** Washing can cause 5% shrinkage.



SOLDER CONNECTION

Email: sales@solderconnection.co.uk | Tel: +44(0)1291 624 400

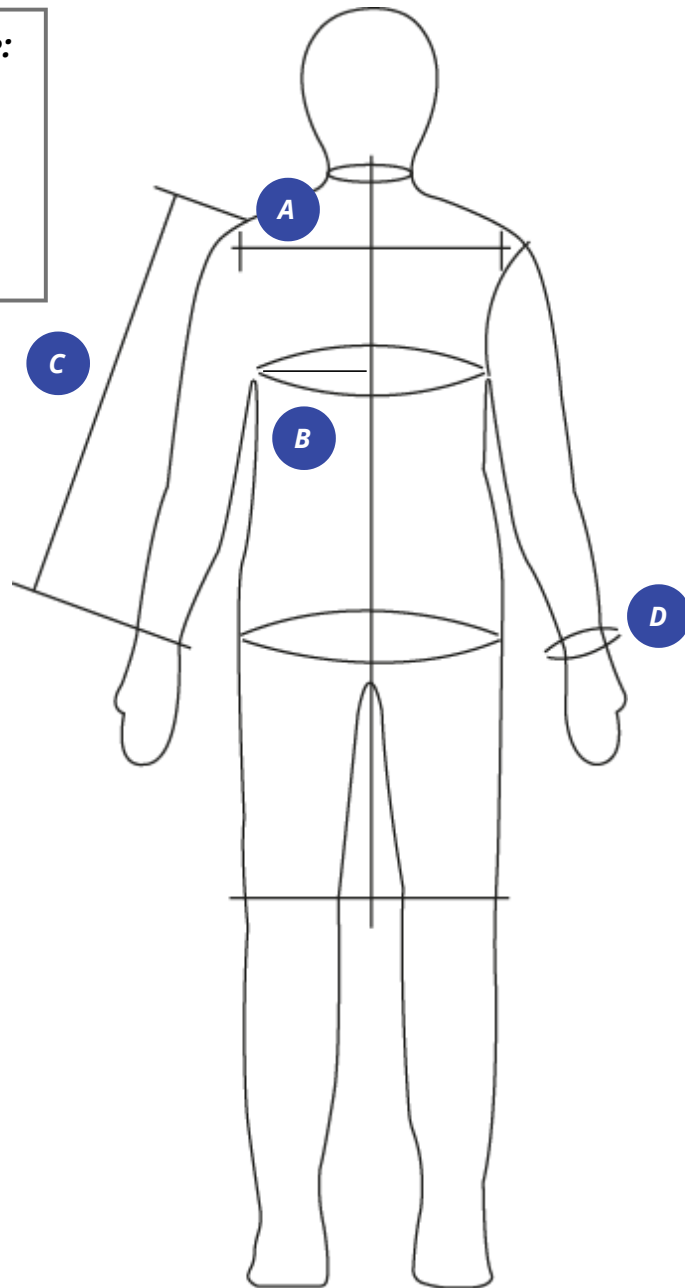
Size Guide Reference:

A: *Shoulder Width*

B: *Half Breast*

C: *Length of Sleeve*

D: *Half Sleeve*



The information contained herein is based on data considered accurate and is offered at no charge. No warranty is expressed or implied regarding the accuracy of this data. Liability is expressly disclaimed for any loss or injury arising out of the use of this information or the use of the materials designated.