

Qi-Series Quick Guide

Please download the full instruction manual from the Ultrawave website

Electrical Safety instructions

The Qi-Series Ultrasonic Baths are designed to be connected to a 230VAC fully earthed electrical supply via a three-pin plug.

It can be dangerous to operate the Ultrasonic Bath without an earth connected.

The Qi-Series machines are rated at up to 1750W maximum.

The detachable mains leads are rated at 250V 6A for the Qi100, Qi200 & Qi300 models and 250V 10A for the Qi400 & Qi500 models. **NEVER FIT A LEAD WITH A LOWER RATING.**

The IEC electrical socket on the rear of the unit is fitted with 2 (time-lag) fuses: Qi100, Qi200 & Qi300 - with T5A and Qi400 & Qi500 - with T10A.

NEVER FIT A FUSE OF A HIGHER RATING.

The detachable mains lead is the disconnect device and should remain accessible while the machine is in use.

Ensure that excess mains cable is stored neatly.

General Safety Instructions

Do not place fingers, hands, or other parts of the body in the liquid in the bath when it is sonicating.

Always ensure the liquid is above the level sensor when in operation.

Do not place parts or containers directly on the bottom of the cleaning tank. Always use a basket or instrument cassette to support items to be cleaned. Not doing so may damage the bath and invalidate your warranty.

Never use toxic, flammable, acidic, caustic, or corrosive solutions in the bath.

Ensure the electrical supply is disconnected before moving/emptying.

Before cleaning, drain the bath. Clean by wiping with a clean non-abrasive cloth.

The user should familiarise themselves with the *full instruction manual* before operating the equipment. Safety may be impaired if they are not followed.

Ultrawave will not be responsible for damage or injury caused by incorrect use of the equipment.

The user should apply to Ultrawave or its agent for advice on cleaning techniques or detergents.

Installation

The following parts and accessories are included with the Qi-Series ultrasonic bath:

- 1 x Basket
- 1 x Lid
- 1 x 2m length of drain hose
- 1 x Hose tail
- 1 x Ultraclean detergent sample
- 1 x Power cable
- 1 x Qi-Series quick guide

How to install:

Locate the Qi-Series close to a drain or sink to allow easy drainage of the tank.

Screw the hose tail connector into the drain valve located on the rear of the unit.

Connect one end of the drain hose to the hose connector and locate the other end over a drain or sink.

Fill the bath with water and the correct dose of detergent.

Connect the power lead into a suitable mains socket.

Ensure that the mains plug, and switch are easily accessible.



Once plugged in, switch on your Qi-Series bath via the on/off switch at the rear of the unit.

The switch will then illuminate.

Your Qi-Series ultrasonic bath is now ready to use.



Controls

The Qi-Series is operated through a menu driven control system:



The different keys perform the following functions:

KEY 1: ← - Starts and ends the ultrasonic cycle

KEY 2: Menu - Scroll through the menu

KEY 3: Up/On - Adjust the settings in the options menu

KEY 4: Down/Off - Adjust the settings in the options menu

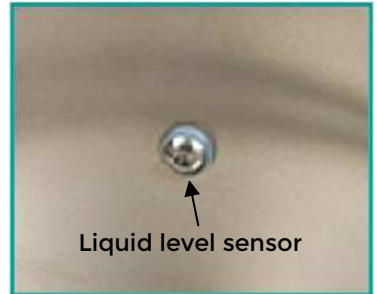
Quick Guide

Pour cold water into the bath so that it submerges the level sensor (Do not overfill).

Add the required dose of detergent.

Switch on the machine via the switch at the rear of the unit, just above the electrical mains lead.

Press the “START” key to accept the programmed cleaning cycle settings and start the cleaning cycle.



At the end of the cycle, remove the basket from the bath and rinse the items under clean running water.

Please refer to the *full instruction manual* for more detailed instructions.

Change the cleaning liquid at regular intervals. Your cleaning process will determine how often to change the liquid – the more soiled your items, the more often you will need to change the liquid.

REMEMBER

- Always ensure the liquid is above the level sensor when in operation.
- Do not put hot water above 50°C into the bath.
- Always use the basket.
- Never expose hands to cleaning solutions
- Never use toxic, flammable, acidic, caustic, or corrosive chemicals or liquids not recommended by Ultrawave.
- Never breathe the fumes from strong solutions.
- Rinse the items in clean water once the cycle is complete.

Subjecting the bath to improper treatment or misuse will invalidate the warranty.

If you require assistance, please call or email Ultrawave.

+44 (0)29 2083 7337 service@ultrawave.co.uk

www.ultrawave.co.uk